



BOSTER
antibody and ELISA experts

Molecular Neuroscience Products

WWW.BOSTERBIO.COM



Molecular Neuroscience

The study of neuroscience through the use of molecular techniques presents an opportunity to vastly increase our understanding of the nervous system and its pathologies. The Boster line of neuroscience related antibodies and ELISA kits is designed to match the needs and expectations of researchers in this field by providing thoroughly validated high-affinity antibodies and high-sensitivity ELISA kits.

Boster: The Fastest Growing Antibody Company In 2015



Boster Bio received the CiteAb award for the greatest increase in number of citations during 2015 than any other antibody manufacturer.

About Boster

Boster is an antibody manufacturer founded in 1993 by histologist Steven Xia. Over the past two decades, Boster and its products have been cited in over 20,000 publications and counting. The firm specializes in developing antibodies and ELISA kits that feature high affinity, high specificity at affordable prices.

Table of Contents

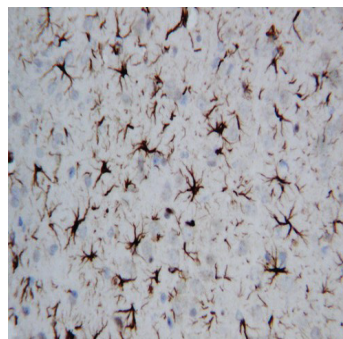
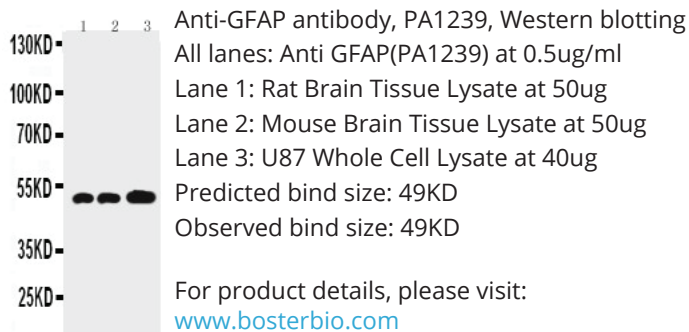
Boster Neuroscience Related Antibodies	2
Boster Neuroscience Related ELISA Kits	16
The Must-Read Guide to Western Blot	20
An ELISA Guide That You Cannot Miss	21
The Most Comprehensive IHC Guide Ever Created	22

High Affinity Boster Antibodies

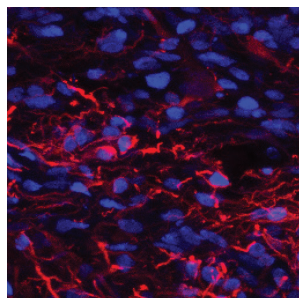
Boster supplies only the highest quality antibodies. Our high-affinity polyclonal and monoclonal antibodies are thoroughly validated by Western Blotting, Immunohistochemistry and ELISA. This is our comprehensive catalog of our antibody products related to neuroscience, sorted in alphabetical order by target gene name.

Anti-GFAP Antibody (PA1239)

GFAP (Glial Fibrillary Acidic Protein), a class-III intermediate filament, is a cell-specific marker that distinguishes astrocytes from other glial cells during the development of the central nervous system.



IHC staining of GFAP (Glial Fibrillary Acidic Protein) on formalin-fixed paraffin-embedded rat brain tissue.



Source: Biocompare.com

"This Antibody Works Perfectly!"

★★★★★ *Excellent*

SUMMARY:
[Anti-GFAP Antibody \(PA1239\)](#)

"I used it for IHC on frozen sections at a dilution of 1:500. It did not need several trials to optimize the protocol. No bad things overall. I will purchase it again."

--*Maria Teresa Dell'Anno,*
NEUROSCIENCE, YALE UNIVERSITY, POSTDOC

Catalog No.	Product Name	Gene Name	Applications	Reactivity
PA1015	Anti-Calretinin	891	IHC-P	Human
PB9129	Anti-HIF1 Beta	HIF1-B	WB	Human
PA1843	Anti-ABCA1	ABCA1	WB	Human
PB9467	Anti-ABCA1	ABCA1	WB	Human
PA2065	Anti-ABCA4	ABCA4	WB	Human
PA2066	Anti-ABCA4	ABCA4	WB	Mouse
PA2091	Anti-PMP70	ABCD3	IHC-P	Human
PA1868	Anti-ABCG1	ABCG1	WB	Human

Catalog No.	Product Name	Gene Name	Applications	Reactivity
PA2067	Anti-ABCG4	ABCG4	WB	Human
PB9417	Anti-ACHE	ACHE	WB	Human
PA1844	Anti-ADAM17	ADAM17	WB	Human
PA1003	Anti-Alpha 2a Adrenergic Receptor	ADRA2A	IHC-P	Human
PA2197	Anti-Alpha 2A Adrenergic Receptor	ADRA2A	WB	Human
PB9682	Anti-GRK3	ADRBK2	WB	Human
PA1069	Anti-RAGE	AGER	IHC-P	Human
PB9469	Anti-RAGE	AGER	IHC-P	Human
PA1481	Anti-AIMP2/p38	AIMP2	IHC-P	Human
PA1671	Anti-ALDH1A1	ALDH1A1	IHC-P	Human
PB9981	Anti-ALDH1A2	ALDH1A2	WB	Human
PA1741	Anti-ALK	ALK	IHC-P	Human
PB9684	Anti-FE65	APBB1	IHC-P	Human
RP1059	Anti-FE65	APBB1	WB	Human
PB9421	Anti-APH1a	APH1A	WB	Human
PA1501	Anti-Apelin	APLN	WB	Human
PA2096	Anti-APLP1	APLP1	IHC-P	Human
PB9476	Anti-APLP1	APLP1	IHC-P	Human
PA1654	Anti-APLP2	APLP2	IHC-P	Human
PA1654-1	Anti-APLP2	APLP2	WB	Human
PA1388	Anti-ApolipoProtein D	APOD	WB	Human
PA1783	Anti-liver Arginase	ARG1	WB	Mouse
RP1075	Anti-liver Arginase	ARG1	WB	Human
PA1938	Anti-ASIC3	ASIC3	WB	Human
PB9422	Anti-Ataxin 1	ATXN1	IHC-P	Human
PA2097	Anti-Ataxin 1	ATXN1	WB	Human
PA2248	Anti-AVPR1A	AVPR1A	WB	Human
PB9526	Anti-BCHE	BCHE	WB	Mouse
PB9075	Anti-BDNF	BDNF	IHC-P	Human

Catalog No.	Product Name	Gene Name	Applications	Reactivity
PA1014	Anti-BDNF	BDNF	WB	Human
MA1041	Anti-Filensin	BFSP1	IHC-F	Bovine
PB9529	Anti-CA1	CA1	IHC-P	Human
PA1425	Anti-Carbonic Anhydrase I	CA1	WB	Human
PA2292	Anti-CACNA1A	CACNA1A	WB	Human
PB9367	Anti-CACNA1C	CACNA1C	WB	Human
PA2293	Anti-CaV1.3	CACNA1D	WB	Human
PB9329	Anti-CaV1.3	CACNA1D	WB	Human
PB9530	Anti-CACNA1F	CACNA1F	WB	Human
PA1759	Anti-SIAH Interacting Protein	CACYBP	IHC-P	Human
RP1104	Anti-CACYBP	CACYBP	IHC-P	Human
PA2294	Anti-SynCAM	CADM1	WB	Human
PB9136	Anti-SynCAM	CADM1	WB	Human
MA1007	Anti-Calbindin-D	CALB1	IHC-P	Bovine
PB9045	Anti-Calbindin	CALB1	IHC-P	Human
PB9248	Anti-Calretinin	CALB2	IHC-P	Human
PB9936	Anti-Calcitonin	CALCA	IHC-P	Human
PB9937	Anti-Calcitonin	CALCA	IHC-P	Mouse
PA1520	Anti-CaMKK	CAMKK1	IHC-P	Human
PA2103	Anti-Caspase-12	CASP12	IHC-P	Human
PA1302-1	Anti-Caspase 3	CASP3	IHC-P	Human
PA1302-2	Anti-Caspase 3	CASP3	IHC-P	Mouse
PA1961-1	Anti-Caspase 3	CASP3	IHC-P	Mouse
PB9188	Anti-Caspase 3	CASP3	IHC-P	Human
PA1849	Anti-Caspase 3	CASP3	WB	Human
PA1961	Anti-Caspase 3	CASP3	WB	Human
PA1302	Anti-Caspase 3	CASP3	WB	Human
PA1441	Anti-Caspase-6	CASP6	IHC-P	Human
PA1441-1	Anti-Caspase-6	CASP6	IHC-P	Mouse

Catalog No.	Product Name	Gene Name	Applications	Reactivity
PB9924	Anti-CASR	CASR	IHC-P	Human
PA1514	Anti-Caveolin-1	CAV1	IHC-P	Human
PB9165	Anti-Caveolin-1	CAV1	IHC-P	Human
PB9166	Anti-Caveolin-2	CAV2	IF	Human
PA1540	Anti-Caveolin-2	CAV2	IHC-P	Human
PA1016	Anti-CCR5	CCR5	IHC-P	Human
PA1016-1	Anti-CCR5	CCR5	WB	Human
PA1016-2	Anti-CCR5	CCR5	WB	Mouse
PA1334	Anti-CD34	CD34	IHC-P	Human
PB9053	Anti-CD34	CD34	IHC-P	Human
PB9097	Anti-Chromogranin A	CHGA	IHC-P	Human
PA2202	Anti-muscarinic Acetylcholine Receptor 1	CHRM1	IHC-P	Human
PA1325-1	Anti-Muscarinic Acetylcholine Receptor 2	CHRM2	IHC-P	Human
PA1325	Anti-Muscarinic Acetylcholine Receptor 2	CHRM2	WB	Bovine
PA1203	Anti-Nicotinic Acetylcholine Receptor Alpha1	CHRNA1	WB	Human
RP1082	Anti-KAT13D/CLOCK	CLOCK	IHC-P	Human
PB9012	Anti-CNTF	CNTF	IHC-P	Human
PB9032	Anti-CNTF	CNTF	IHC-P	Mouse
PA2203	Anti-COMT	COMT	IHC-P	Human
PB9539	Anti-COMT	COMT	IHC-P	Human
PA1808	Anti-CrkL	CRKL	WB	Human
PB9576	Anti-CRY2	CRY2	IHC-P	Mouse
PB9046	Anti-Cathepsin B	CTSB	WB	Mouse
MA1013	Anti-Cathepsin D	CTSD	IHC-P	Human
PB9047	Anti-Cathepsin D	CTSD	IHC-P	Human
PB9048	Anti-Cathepsin D	CTSD	IHC-P	Mouse
PB9854	Anti-Cathepsin D	CTSD	IHC-P	Human
MA1014	Anti-Cathepsin L	CTSL1	IHC-F	Human
PB10000	Anti-DDAH1	DDAH1	WB	Mouse

Catalog No.	Product Name	Gene Name	Applications	Reactivity
PB10001	Anti-DDAH2	DDAH2	IHC-P	Human
PA1878	Anti-MCK10	DDR1	WB	Human
PA1879	Anti-DDR2	DDR2	WB	Human
PA2023-1	Anti-DISC1	DISC1	IHC-P	Human
PA2023	Anti-DISC1	DISC1	WB	Human
PA1463	Anti-Lipoamide Dehydrogenase	DLD	IHC-P	Human
PB9579	Anti-DLD	DLD	IHC-P	Human
PB9552	Anti-SAP97	DLG1	IHC-P	Human
PA2295	Anti-PSD95	DLG4	IHC-P	Human
PB9802	Anti-PSD95	DLG4	IHC-P	Human
PA1911	Anti-DLL1	DLL1	WB	Human
PA1912	Anti-DLL3	DLL3	WB	Human
PA1571	Anti-Dopamine Receptor D1	DRD1	IHC-P	Human
PA1231	Anti-Dopamine Receptor D1	DRD1	WB	Human
PA1572	Anti-Dopamine Receptor D1	DRD1	WB	Human
PB9177	Anti-DRD1	DRD1	WB	Human
PA2234	Anti-Dopamine D2 Receptor	DRD2	IHC-P	Human
PA1584	Anti-Dopamine Receptor D3	DRD3	IHC-P	Mouse
PA2204	Anti-Dopamine Receptor D5	DRD5	WB	Human
PA2031	Anti-Integrin Beta 4 Binding Protein	EIF6	IHC-P	Human
PB9582	Anti-EIF6	EIF6	IHC-P	Human
PB9698	Anti-ELAVL4	ELAVL4	IHC-P	Mouse
PA1395	Anti-CD105	ENG	IHC-P	Mouse
PB9054	Anti-CD105	ENG	WB	Human
PA2058	Anti-Prothrombin	F2	WB	Human
PA2059	Anti-Prothrombin	F2	WB	Rat
PB9623	Anti-Flotillin 2	FLOT2	IHC-P	Human
PA2034	Anti-Flotillin 2	FLOT2	WB	Human
PB9703	Anti-FMRP	FMR1	WB	Mouse

Catalog No.	Product Name	Gene Name	Applications	Reactivity
PA1035	Anti-FSH Receptor	FSHR	IHC-P	Human
PB9197	Anti-Fyn	FYN	WB	Human
PA1578	Anti-GABA A Receptor Alpha 1	GABRA1	IHC-P	Human
PB9595	Anti-GABRB3	GABRB3	WB	Human
PA1403	Anti-GAD65	GAD2	IHC-P	Human
MA1042	Anti-GAP43	GAP43	IHC-P	Human
PA1037	Anti-GAP43	GAP43	IHC-P	Human
PB9107	Anti-GAPDH	GAPDH	WB	Human
PA1338	Anti-GAPDH	GAPDH, GAPDH	IHC-P	Human
PA1338-1	Anti-GAPDH	GAPDH, GAPDH	IHC-P	Human
PA1465	Anti-GDNF	GDNF	IHC-P	Human
PB9069	Anti-GDNF	GDNF	WB	Human
MA1045	Anti-GFAP	GFAP	IHC-P	Human
PA1239	Anti-GFAP	GFAP	IHC-P	Human
PB9082	Anti-GFAP	GFAP	IHC-P	Human
PB9202	Anti-GFRA1	GFRA1	IHC-P	Human
PA1206	Anti-GHR	GHR	IHC-P	Human
PA1726	Anti-GHR	GHR	WB	Mouse
PA1367	Anti-Connexin 32/GJB1	GJB1	IHC-P	Human
PB9706	Anti-GJC2	GJC2	WB	Human
PA2235	Anti-G-Protein Coupled Receptor 30	GPER1	WB	Human
PB9204	Anti-GRIA1	GRIA1	IHC-P	Human
PA1587	Anti-Glutamate Receptor 1	GRIA1	WB	Human
PA1598	Anti-Ionotropic Glutamate Receptor 2	GRIA2	IHC-P	Human
PB9205	Anti-GRIA2	GRIA2	IHC-P	Human
PA2249	Anti-Glutamate Receptor 3	GRIA3	WB	Human
PB9206	Anti-GRIA3	GRIA3	WB	Human
PB9207	Anti-GRIA4	GRIA4	WB	Human
PB9208	Anti-GRIK1	GRIK1	WB	Human

Catalog No.	Product Name	Gene Name	Applications	Reactivity
PA1222	Anti-NMDAR1	GRIN1	IHC-P	Human
PA1058-1	Anti-NMDAR2A	GRIN2A	IHC-P	Human
PA1058	Anti-NMDAR2A	GRIN2A	IHC-P	Human
PB9335	Anti-NMDAR2A	GRIN2A	WB	Human
PA1059	Anti-NMDAR2B	GRIN2B	WB	Human
PA1059-1	Anti-NMDAR2B	GRIN2B	WB	Human
PB9373	Anti-NMDAR2B	GRIN2B	WB	Human
PB9374	Anti-NMDAR2C	GRIN2C	WB	Human
PB9210	Anti-HCN1	HCN1	WB	Human
PA1100	Anti-Orexin Receptor 1	HCRT1	IHC-P	Human
PA2193	Anti-Hes1	HES1	WB	Human
PB9085	Anti-HO-1/HMOX1	HMOX1	IHC-P	Mouse
PB9212	Anti-HO-1/HMOX1	HMOX1	IHC-P	Human
PB9220	Anti-HRG	HRG	IHC-P	Human
PA1204	Anti-HRH3	HRH3	WB	Human
PB9336	Anti-ERAB d™	HSD17B10	IHC-P	Human
PA1789	Anti-Grp75	HSPA9	IHC-P	Human
PB9642	Anti-Grp75	HSPA9	IHC-P	Human
PA1647	Anti-5HT1A Receptor	HTR1A	IHC-P	Human
PA1373	Anti-5HT2A Receptor	HTR2A	IHC-P	Human
PB9599	Anti-5HT2A Receptor	HTR2A	WB	Human
PB9600	Anti-5HT2B Receptor	HTR2B	WB	Human
PA1610	Anti-5HT3A Receptor	HTR3A	IHC-P	Human
PA2268	Anti-Huntingtin	HTT	WB	Human
PB9495	Anti-ICA1	ICA1	WB	Human
PB9428	Anti-ITPR3	ITPR3	IHC-P	Human
PB9255	Anti-Jagged 2	JAG2	WB	Human
PA2296	Anti-Kv1.1 Potassium Channel	KCNA1	WB	Human
PB9649	Anti-Kv1.2	KCNA2	WB	Human

Catalog No.	Product Name	Gene Name	Applications	Reactivity
PB9807	Anti-Kv1.4	KCNA4	IHC-P	Human
PA2297	Anti-Kv1.4	KCNA4	WB	Human
PA2271	Anti-Kv1.6	KCNA6	WB	Human
PB9111	Anti-Kv2.1	KCNB1	IHC-P	Human
PA2298	Anti-KCNC1	KCNC1	WB	Human
PB9256	Anti-KCND1	KCND1	WB	Human
PB9228	Anti-Kv4.2	KCND2	WB	Human
PB9229	Anti-Kv4.3	KCND3	WB	Human
PB9257	Anti-KCNH2	KCNH2	WB	Human
PB9652	Anti-KChIP2	KCNIP2	IHC-P	Human
PA1047	Anti-KCA3.1	KCNN4	IHC-P	Human
PA1047-1	Anti-KCNN4	KCNN4	WB	Human
PA2299	Anti-KCNQ2	KCNQ2	WB	Human
PA2300	Anti-KCNQ5	KCNQ5	WB	Human
PB9259	Anti-Kallikrein 3	KLK3	WB	Human
PA1820	Anti-Kallikrein 9	KLK9	WB	Human
PA2160	Anti-Laminin 2 Alpha	LAMA2	WB	Human
PA1822	Anti-LAMP1	LAMP1	WB	Human
PB9239	Anti-NTAL	LAT2	IHC-P	Human
PA2039	Anti-NTAL	LAT2	WB	Human
PA1659	Anti-LCN1	LCN1	IHC-P	Human
PA1552	Anti-hCG Receptor	LHCGR	IHC-P	Human
PB9716	Anti-LIMK1	LIMK1	WB	Human
PB9143	Anti-LRP1	LRP1	WB	Human
PB9281	Anti-LRRK2	LRRK2	WB	Human
PA1751	Anti-MAG	MAG	IHC-P	Human
PA1751-1	Anti-MAG	MAG	WB	Human
PB9809	Anti-MAG	MAG	WB	Human
PA1648	Anti-Monoamine Oxidase A	MAOA	IHC-P	Human

Catalog No.	Product Name	Gene Name	Applications	Reactivity
PB9664	Anti-MAOA	MAOA	IHC-P	Human
PA1649	Anti-Monoamine Oxidase B	MAOB	IHC-P	Mouse
PB9665	Anti-MAOB	MAOB	IHC-P	Human
MA1057	Anti-MAP2	MAP2	IHC-P	Human
PA1343	Anti-ERK1	MAPK3	IHC-P	Human
MA1093	Anti-Tau	MAPT	IHC-P	Bovine
PA1482	Anti-Tau	MAPT	WB	Human
PA1530	Anti-Midkine	MDK	WB	Human
RP1051	Anti-Midkine	MDK	WB	Human
PA2276	Anti-Mer	MERTK	WB	Human
PB9264	Anti-Mitofusin 1	MFN1	WB	Human
PA2212	Anti-MMP24	MMP24	WB	Human
MA1068	Anti-CD56/NCAM-1	NCAM1	ICC	Human
PA1055	Anti-CD56/NCAM-1	NCAM1	IHC-P	Human
PA2250	Anti-NCSTN	NCSTN	WB	Human
PA1416	Anti-NDRG1	NDRG1	IHC-P	Human
PB9672	Anti-NDRG2	NDRG2	IHC-P	Human
PA2148	Anti-NDRG2	NDRG2	WB	Human
MA1071	Anti-NEFH	NEFH	IHC-P	Human
MA1070	Anti-NF68	NEFL	IHC-P	Human
PB9874	Anti-Nestin	NES	IHC-P	Human
PA1056	Anti-NGF/NGF beta	NGF	WB	Human
PA2304	Anti-TNFRSF16/NGFR	NGFR	WB	Human
PB9293	Anti-Nkx2.5	NKX2-5	WB	Human
PA1330	Anti-iNOS	NOS2	IHC-P	Human
PA1330-1	Anti-NOS2	NOS2	WB	Human
PA1712-1	Anti-eNOS	NOS3	IHC-P	Human
PA1712	Anti-eNOS	NOS3	IHC-P	Human
PA1215	Anti-Notch1	NOTCH1	WB	Human

Catalog No.	Product Name	Gene Name	Applications	Reactivity
PA1931	Anti-Nucleophosmin	NPM1	IHC-P	Human
PB9341	Anti-Nucleophosmin	NPM1	IHC-P	Human
PB9296	Anti-Neuropeptide Y	NPY	IHC-P	Human
PB9297	Anti-Nurr1	NR4A2	WB	Human
PA1969	Anti-Neuregulin-1/NRG1-beta1	NRG1	IHC-P	Human
PB9299	Anti-Neuregulin-1/NRG1-beta1	NRG1	WB	Human
PA1637	Anti-NRG2	NRG2	WB	Human
PA1771	Anti-Neuropilin-2	NRP2	WB	Human
PA1062	Anti-Neurotrophin-3	NTF3	IHC-P	Human
PA1662	Anti-Netrin 1	NTN1	WB	Human
PA1321	Anti-TrkA	NTRK1	IHC-P	Human
PA2149-1	Anti-TrkA	NTRK1	WB	Human
PA2149-2	Anti-TrkA	NTRK1	WB	Mouse
PA2150	Anti-TrkB	NTRK2	WB	Human
PB9378	Anti-TrkB	NTRK2	WB	Human
PA1992-1	Anti-TrkC	NTRK3	IHC-P	Human
PA1992	Anti-TrkC	NTRK3	WB	Human
PB9301	Anti-NUMB	NUMB	WB	Human
PB9767	Anti-OGT	OGT	IHC-P	Human
PA2213	Anti-Olig1	OLIG1	WB	Human
PB9730	Anti-OMG	OMG	WB	Human
PB9731	Anti-OPA1	OPA1	IHC-P	Human
PA1131	Anti-OPCML	OPCML	IHC-P	Human
PB9616	Anti-Otoferlin	OTOF	IHC-P	Human
PB9344	Anti-Otx2	OTX2	WB	Human
PB9303	Anti-P2X2	P2RX2	IHC-P	Human
PA1213	Anti-P2X3	P2RX3	WB	Human
PA2127	Anti-P2RX4	P2RX4	WB	Human
PB9304	Anti-P2RX4	P2RX4	WB	Human

Catalog No.	Product Name	Gene Name	Applications	Reactivity
PB9305	Anti-P2X5	P2RX5	IHC-P	Human
PA2128	Anti-P2X6	P2RX6	WB	Human
PA2129	Anti-P2RX7	P2RX7	WB	Human
PB9307	Anti-Parkin	PARK2	IHC-P	Human
PB9308	Anti-PARK7/DJ1	PARK7	IHC-P	Human
PB9555	Anti-Parvin Alpha	PARVA	IHC-P	Human
PB9734	Anti-Pax2	PAX2	IHC-P	Human
PB9768	Anti-PAX6	PAX6	IHC-P	Human
PA2044	Anti-PER1	PER1	WB	Human
PB9312	Anti-PER2	PER2	WB	Human
PB9316	Anti-Pin1	PIN1	WB	Human
PA1226	Anti-NTE	PNPLA6	IHC-P	Zebrafish
PB9039	Anti-ACTH	POMC	IHC-P	Human
PA2253	Anti-PON1	PON1	WB	Human
PA2254	Anti-PON2	PON2	WB	Human
PB9779	Anti-PON2	PON2	WB	Human
PB9879	Anti-DARPP32	PPP1R1B	IHC-P	Human
PA1834	Anti-Peroxiredoxin 2	PRDX2	WB	Human
PA1795	Anti-Prion Protein PrP	PRNP	IHC-P	Mouse
PB9783	Anti-PRNP	PRNP	IHC-P	Human
PA1794	Anti-Prion Protein PrP	PRNP	WB	Human
PA2229	Anti-PROX1	PROX1	WB	Human
PA1358	Anti-Presenilin 2	PSEN2	IHC-P	Human
PA1414	Anti-Pleiotrophin	PTN	IHC-P	Human
PB10014	Anti-Peptide YY	PYY	WB	Mouse
PA1773	Anti-Rab5	RAB5A	IHC-P	Human
PB9787	Anti-Rab5	RAB5A	IHC-P	Human
PA2255	Anti-Reticulon 1	RTN1	WB	Human
PA1060	Anti-Nogo A	RTN4	IHC-P	Human

Catalog No.	Product Name	Gene Name	Applications	Reactivity
PB9157	Anti-RUNX1/AML1	RUNX1	IHC-P	Human
PA1224	Anti-RUNX2	RUNX2	WB	Human
PB9158	Anti-RUNX2	RUNX2	WB	Human
PB9432	Anti-RUNX3	RUNX3	IHC-P	Human
PA2112	Anti-RUNX3	RUNX3	WB	Mouse
PB9742	Anti-S100A8	S100A8	IHC-P	Mouse
PB9887	Anti-Scn1a	SCN1A	WB	Human
PA1244	Anti-SCN1B	SCN1B	WB	Human
PB9958	Anti-Nav1.5	SCN5A	WB	Human
PB9743	Anti-SDC1/Syndecan-1	SDC1	WB	Human
PA1704	Anti-sE-Selectin	SELE	IHC-P	Human
PA2216	Anti-Selenium Binding Protein 1	SELENBP1	IHC-P	Zebrafish
PB9353	Anti-Semaphorin 3A	SEMA3A	WB	Human
PA2217	Anti-Alpha 1 Antichymotrypsin	SERPINA3	IHC-P	Human
PB9744	Anti-Neuroserpin	SERPINI1	WB	Human
PA1797	Anti-14-3-3 Sigma	SFN	IHC-P	Human
RP1109	Anti-SHANK3	SHANK3	WB	Human
PA1897	Anti-SHC	SHC1	IHC-P	Human
PB9391	Anti-SHC	SHC1	IHC-P	Mouse
PA2171	Anti-SLC12A6	SLC12A6	WB	Human
PA2164-1	Anti-EAAT3	SLC1A1	WB	Human
PA2164-2	Anti-EAAT3	SLC1A1	WB	Mouse
RP1065	Anti-EAAT2	SLC1A2	WB	Human
PA2185	Anti-EAAT1	SLC1A3	IHC-P	Human
PB9959	Anti-EAAT1	SLC1A3	IHC-P	Human
PA1038	Anti-Glast	SLC1A3	WB	Human
PA2243	Anti-EAAT4	SLC1A6	WB	Human
PA2191	Anti-SLC30A4	SLC30A4	IHC-P	Human
PA1721	Anti-GABA Transporter 1/GAT 1	SLC6A1	IHC-P	Human

Catalog No.	Product Name	Gene Name	Applications	Reactivity
PA1706	Anti-Serotonin Transporter	SLC6A4	IHC-P	Rat
PB9399	Anti-SNAIL	SNAI1	WB	Human
PB9439	Anti-SLUG	SNAI2	IHC-P	Human
PA1774	Anti-SNAP23	SNAP23	IHC-P	Human
PA1315	Anti-SNAP25	SNAP25	IHC-P	Human
PA2284	Anti-SOX2	SOX2	IHC-P	Human
PB9618	Anti-SOX4	SOX4	WB	Human
PA2054	Anti-Somatostatin	SST	IHC-P	Human
PA1346	Anti-Somatostatin	SST	IHC-P	Human
PA1693	Anti-Somatostatin Receptor 1	SSTR1	IHC-P	Human
PA1694	Anti-Somatostatin Receptor 2	SSTR2	WB	Human
PB9560	Anti-Stathmin 1	STMN1	IHC-P	Human
PB9408	Anti-Syntaxin 1A	STX1A	WB	Human
PB9819	Anti-Munc18-1	STXBP1	IHC-P	Human
PA1684	Anti-Neurokinin 1 Receptor	TACR1	WB	Human
PB9446	Anti-TACR1	TACR1	WB	Human
MA1100	Anti-Tyrosine Hydroxylase	TH	IHC-P	Human
PA1732	Anti-Tyrosine Hydroxylase	TH	IHC-P	Human
PB9449	Anti-TH	TH	IHC-P	Mouse
PB9450	Anti-THBS1/TSP1	THBS1	WB	Human
PA2055	Anti-Tenascin-C/TNC	TNC	IHC-P	Human
PA1695-1	Anti-TNR	TNR	IHC-P	Human
PA1695	Anti-TNR	TNR	IHC-P	Human
PB9899	Anti-TPP1	TPP1	IHC-P	Human
PA2307	Anti-TRPC4	TRPC4	WB	Human
PB9271	Anti-TRPC5	TRPC5	WB	Human
PB9902	Anti-TRPM4	TRPM4	IHC-P	Human
PB9903	Anti-TRPM5	TRPM5	IHC-P	Human
PA1977	Anti-VRL1	TRPV2	IHC-P	Human

Catalog No.	Product Name	Gene Name	Applications	Reactivity
PA1978	Anti-TRPV3	TRPV3	WB	Human
PA1979	Anti-TRPV4	TRPV4	WB	Human
PB9749	Anti-Prealbumin	TTR	IHC-P	Human
PB9750	Anti-Prealbumin	TTR	IHC-P	Mouse
PB9680	Anti-Prealbumin	TTR	IHC-P	Mouse
PA1420	Anti-Ubiquitin	UBB	IHC-P	Human
PB9122	Anti-Ubiquitin	UBB	IHC-P	Human
PB9841	Anti-UNC5C	UNC5C	WB	Human
PA2137	Anti-VCP	VCP	IHC-P	Human
PB9454	Anti-VCP	VCP	IHC-P	Human
MA1102	Anti-Vimentin	VIM	IHC-P	Human
PB9359	Anti-Vimentin	VIM	IHC-P	Human
RP1108	Anti-VIP	VIP	IHC-P	Human
PB9619	Anti-Wnt3	WNT3	WB	Human
PA2120	Anti-Wnt3a	WNT3A	WB	Human
PB9063	Anti-Wnt5a	WNT5A	IHC-P	Human
PA1959	Anti-Smad Interacting Protein 1	ZEB2	WB	Human
PB9236	Anti-ZEB2	ZEB2	WB	Human

High Sensitivity Boster ELISA Kits

Boster Bio is proud to present our latest catalog of ELISA kit products. Our high sensitivity, high specificity ELISA kits are thoroughly tested alongside our antibody products. This is our comprehensive catalog of our ELISA kits related to neuroscience, sorted in alphabetical order by target gene name.

Mouse GDNF PicoKine™ ELISA Kit (EK0935)

GDNF (glial cell line-derived neurotrophic factor) is a neurotrophic factor that enhances survival and morphological differentiation of dopaminergic neurons and increases their high-affinity dopamine uptake. GDNF may have utility in the treatment of Parkinson's disease, which is marked by progressive degeneration of midbrain dopaminergic neurons.

For product details, please visit:
www.bosterbio.com



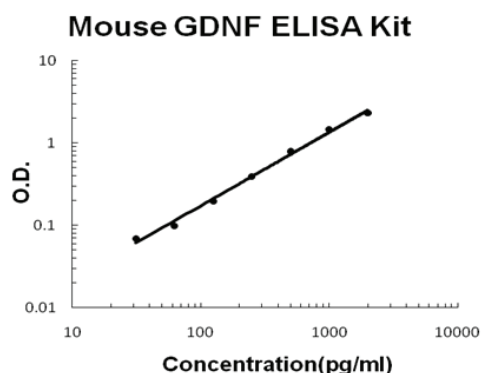
Source: Biocompare.com

"Easy to Use GDNF ELISA Kit"

★★★★★ Excellent

"We used this kit and the BDNF kit, because we were looking at neurogenesis within the hippocampus. We used the ELISA to complement our immunohistochemistry. It was easy to optimize the kits and the instructions were extremely easy to follow. Additionally, the instructions do not include using samples from tissue homogenates, but we did and the plates came out great. This product was selected after speaking with a representative about it at a conference. I am extremely glad we decided to go with this kit. This is a great kit. The protocol was easy to follow and optimize. We will be using these kits again."

--Hannah Oakes,
 EAST TENNESSEE STATE UNIVERSITY, BIOMEDICAL SCIENCES, GRADUATE ASSISTANT



Catalog No.	Product Name	Gene Name	Applications	Reactivity
EK1402	Human CD97	ADGRE5	ELISA	Human
EK0827	Human Rage	AGER	ELISA	Human
EK0828	Mouse RAGE	AGER	ELISA	Mouse
EK0971	Rat RAGE	AGER	ELISA	Rat
EK0307	Human BDNF	BDNF	ELISA	Human
EK0308	Rat BDNF	BDNF	ELISA	Rat
EK0309	Mouse BDNF	BDNF	ELISA	Mouse
EK1425	Human Caspase 3	CASP3	ELISA	Human

Catalog No.	Product Name	Gene Name	Applications	Reactivity
EK1401	Mouse Chordin	CHRD	ELISA	Mouse
EK0324	Rat CNTF	CNTF	ELISA	Rat
PB9067	Anti-CNTF	CNTF	ELISA	Mouse
PB9851	Anti-CNTF	CNTF	ELISA	Human
EK1406	Human COMT	COMT	ELISA	Human
EK0670	Human Cathepsin B	CTSB	ELISA	Human
EK0671	Mouse Cathepsin B	CTSB	ELISA	Mouse
EK0672	Human Cathepsin D	CTSD	ELISA	Human
EK0673	Mouse Cathepsin D	CTSD	ELISA	Mouse
EK0676	Human Cathepsin L	CTSL	ELISA	Human
EK1276	Human DLL1	DLL1	ELISA	Human
EK1277	Mouse DLL4	DLL4	ELISA	Mouse
EK0644	Human CD105	ENG	ELISA	Human
EK0362	Human GDNF	GDNF	ELISA	Human
EK0363	Rat GDNF	GDNF	ELISA	Rat
EK0935	Mouse GDNF	GDNF	ELISA	Mouse
EK1467	Human GHR	GHR	ELISA	Human
EK0973	Human Progranulin	GRN	ELISA	Human
EK1192	Mouse Progranulin	GRN	ELISA	Mouse
EK1370	Mouse Hemojuvelin	HFE2	ELISA	Mouse
EK0888	Human HO-1/HMOX1	HMOX1	ELISA	Human
EK1529	Human ICAM5	ICAM5	ELISA	Human
EK0816	Human Kallikrein 3	KLK3	ELISA	Human
EK1278	Human Galectin-2	LGALS2	ELISA	Human
EK1279	Mouse Galectin-7	LGALS7	ELISA	Mouse
EK1286	Human Galectin-7	LGALS7	ELISA	Human
EK1503	Human LRIG3	LRIG3	ELISA	Human
EK1235	Human Midkine	MDK	ELISA	Human
EK0810	Human Mer	MERTK	ELISA	Human

Catalog No.	Product Name	Gene Name	Applications	Reactivity
EK0811	Mouse Mer	MERTK	ELISA	Mouse
EK0706	Human CD56/NCAM-1	NCAM1	ELISA	Human
EK1223	Mouse CD56/NCAM-1	NCAM1	ELISA	Mouse
EK0469	Human NGF/NGF Beta	NGF	ELISA	Human
EK0470	Mouse NGF/NGF Beta	NGF	ELISA	Mouse
EK0471	Rat NGF/NGF Beta	NGF	ELISA	Rat
RP1025	Anti-NGF/NGF beta	NGF	ELISA	Human
EK0972	Human TNFRSF16/NGFR	NGFR	ELISA	Human
EK1408	Human NRCAM	NRCAM	ELISA	Human
EK1378	Human Neuregulin-1/NRG1-Beta1	NRG1	ELISA	Human
EK1344	Mouse Neuropilin-2	NRP2	ELISA	Mouse
EK1345	Rat Neuropilin-2	NRP2	ELISA	Rat
EK0472	Human Neurotrophin-3	NTF3	ELISA	Human
EK0473	Mouse Neurotrophin-3	NTF3	ELISA	Mouse
EK0474	Rat Neurotrophin-3	NTF3	ELISA	Rat
EK0475	Human NT-4	NTF4	ELISA	Human
EK0846	Human TrkA	NTRK1	ELISA	Human
EK0847	Rat TrkA	NTRK1	ELISA	Rat
EK0849	Mouse TrkB	NTRK2	ELISA	Mouse
EK1141	Human PON1	PON1	ELISA	Human
EK1509	Human Persephin	PSPN	ELISA	Human
EK1499	Mouse Persephin	PSPN	ELISA	Mouse
EK0861	Human PTX3/Pentraxin 3	PTX3	ELISA	Human
EK0862	Mouse PTX3/Pentraxin 3	PTX3	ELISA	Mouse
EK1407	Human Relaxin 3	RLN3	ELISA	Human
EK1150	Mouse S100A8	S100A8	ELISA	Mouse
EK1339	Human SDC1/Syndecan-1	SDC1	ELISA	Human
EK0501	Human sE-Selectin	SELE	ELISA	Human
EK0502	Mouse sE-Selectin	SELE	ELISA	Mouse

Catalog No.	Product Name	Gene Name	Applications	Reactivity
EK0936	Rat sE-Selectin	SELE	ELISA	Rat
EK0773	Human HAI-2/SPINT2	SPINT2	ELISA	Human
EK0774	Mouse HAI-2/SPINT2	SPINT2	ELISA	Mouse
EK0899	Human THBS1/TSP1	THBS1	ELISA	Human
EK1170	Human Tenascin-C/TNC	TNC	ELISA	Human
EK1496	Human DTK/TYRO3	TYRO3	ELISA	Human

The Must-Read Guide to Western Blot

How to Become a Western Blot Expert in 4 Days



Free download at
bosterbio.com/wb-ebook

What is in the ebook?

This guide will teach you everything you need to become a Western Blot (WB) expert, including comprehensive principle overview, insightful troubleshooting tips and more.

✓ Western Blot Principle

Having a solid understanding of how Western blot works significantly increases your success rate. We have everything you need to know from sample preparation to data interpretation.

✓ Optimized Protocol

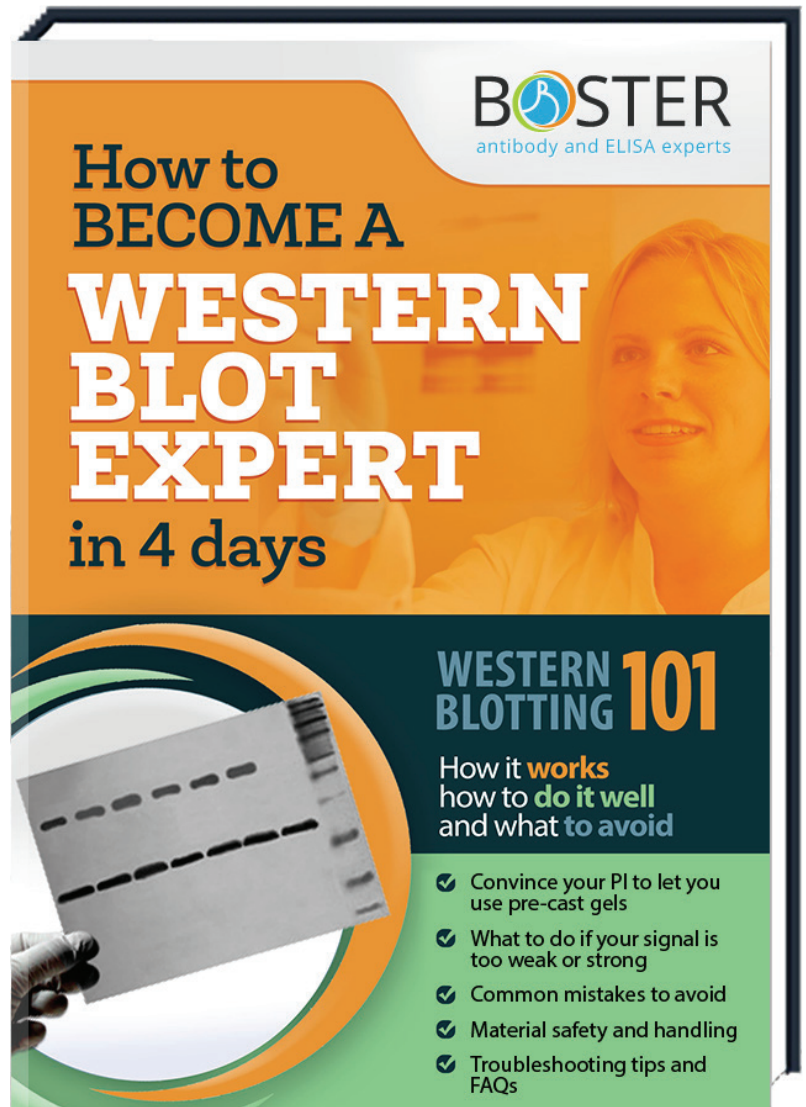
Western blot is complex and tricky in many ways. Our step-by-step protocol will guide you to generate reproducible, high quality data.

✓ 100+ Troubleshooting Advices

Having our comprehensive troubleshooting tips right on your bench side can save you a lot of precious time and headache.

✓ Frequently Asked Questions

Learning from your peers' experiences can bring you novel perspectives and help you avoid common mistakes.



An ELISA Guide That You Cannot Miss

How to Become an ELISA Expert in 4 Days

Free download at
bosterbio.com/elisa-ebook

What is in the ebook?

This guide will teach you everything you need to become a ELISA expert, including critical review of principle, all-in-one FAQs and more.

✓ ELISA Principle

Having a solid understanding of how ELISA works significantly puts you ahead of the learning curve. We have everything you need to know from sample preparation to data analysis.

✓ Optimized Protocol

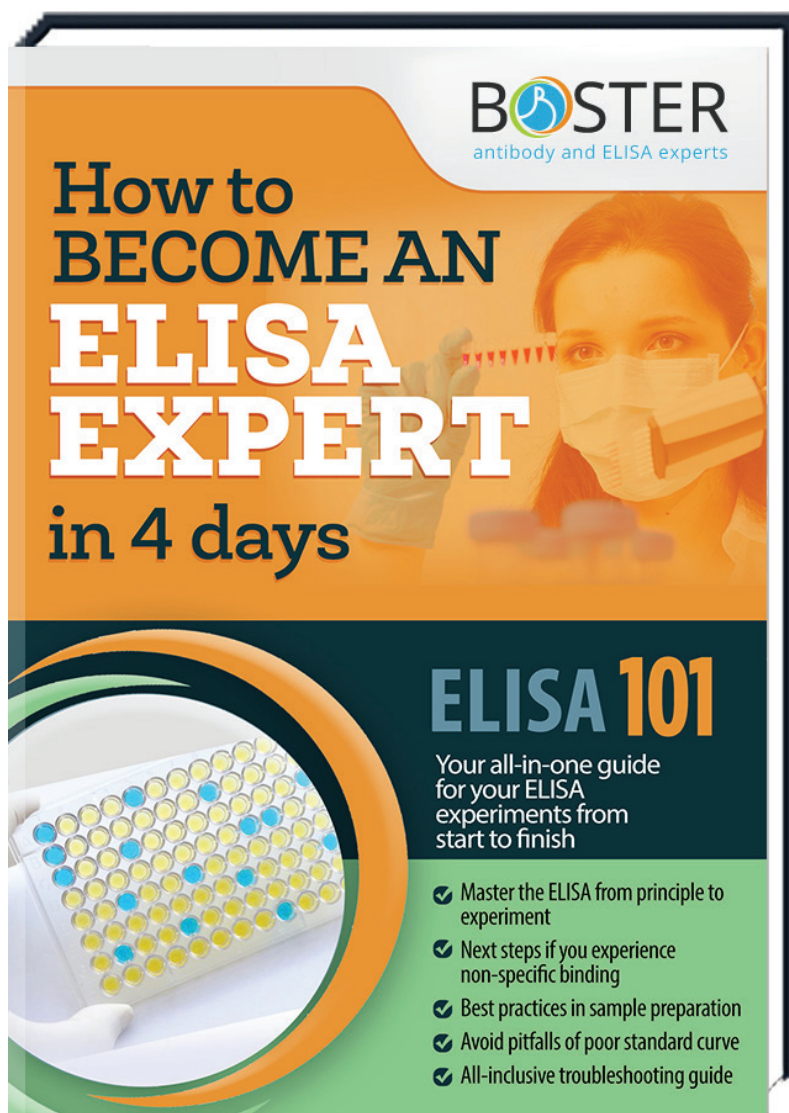
ELISA is complex and prone to errors in many ways. Our step-by-step protocol will guide you to generate reproducible, high quality data.

✓ 150+ Troubleshooting Advices

Having our troubleshooting guidance that addresses all kinds of problems can save you a lot of precious time and headache.

✓ Frequently Asked Questions

Learning from your peers' experiences can bring you novel perspectives and help you avoid common mistakes.



The Most Comprehensive IHC Guide Ever Created

How to Become an Immunohistochemistry Expert in 4 Days

Free download at
bosterbio.com/ihc-ebook

What is in the ebook?

This guide will show you all the nuts and bolts for Immunohistochemistry (IHC), including expert review of principle, optimized protocol that really works and more.

✔ Immunohistochemistry (IHC) Principle

Having a solid understanding of how IHC works significantly increases your success rate. We have everything you need to know from sample preparation to final counterstain.

✔ Optimized Protocol

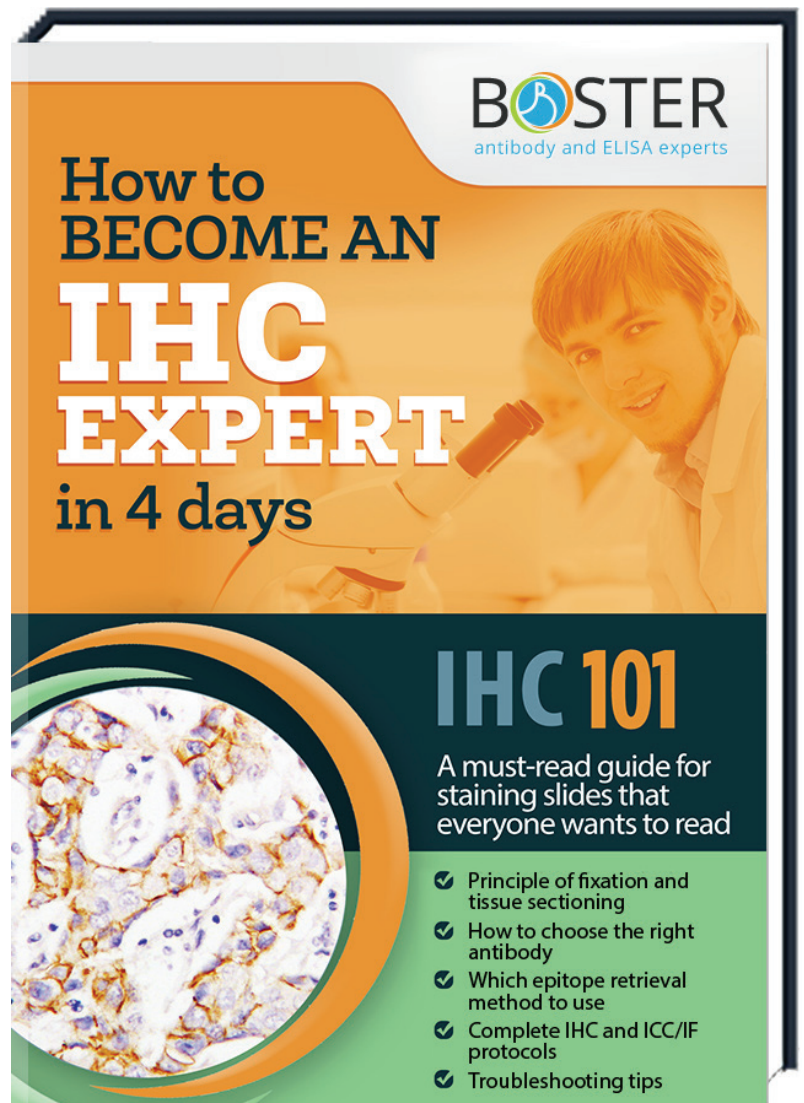
IHC is complex and tricky in many ways. Our step-by-step protocol will guide you to generate reproducible, high quality data.

✔ Comprehensive Troubleshooting Tips

Having our troubleshooting tips that address all kinds of problems can save you a lot of valuable time and headache.

✔ Frequently Asked Questions

Learning from your peers' experiences can bring you novel perspectives and help you avoid common mistakes.



BOSTER

antibody and ELISA experts

3942 B Valley Ave,
Pleasanton, CA, 94566

TEL: (888) 466-3604

WWW.BOSTERBIO.COM

